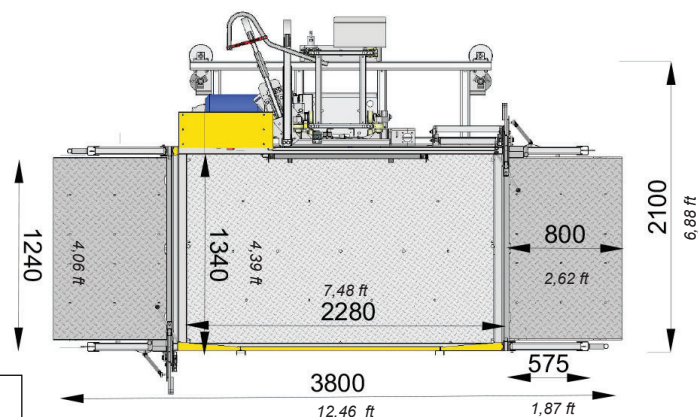


|         | ① Dimensioni<br>Dimensions<br>2,28 x 1,34 | ② Dimensioni<br>Dimensions<br>3,40 x 1,34 | ③ Dimensioni<br>Dimensions<br>4,00 x 1,34 | ④ Dimensioni<br>Dimensions<br>3,08 x 1,64 | ⑤ Dimensioni<br>Dimensions<br>3,43 x 1,64 |             |
|---------|-------------------------------------------|-------------------------------------------|-------------------------------------------|-------------------------------------------|-------------------------------------------|-------------|
|         | 2300 kg                                   | 2000 kg                                   | 1500 kg                                   | 2000 kg                                   | 1800 kg                                   | <b>EHM</b>  |
| ↑       | +2200 kg                                  | +1900 kg                                  | +1400 kg                                  | +1900 kg                                  | +1700 kg                                  | <b>EHPM</b> |
| ↑↑      | +2100 kg                                  | +1800 kg                                  | +1300 kg                                  | +1800 kg                                  | +1600 kg                                  |             |
| ↑↑↑     | +2000 kg                                  | +1700 kg                                  | +1200 kg                                  | +1700 kg                                  | +1500 kg                                  |             |
| ↑↑↑↑    | +1900 kg                                  | +1600 kg                                  | +1100 kg                                  | +1600 kg                                  | +1400 kg                                  |             |
| ↑↑↑↑↑   | +1800 kg                                  | +1500 kg                                  | +1000 kg                                  | +1500 kg                                  | +1300 kg                                  |             |
| ↑↑↑↑↑↑  | +1700 kg                                  | +1400 kg                                  | +900 kg                                   | +1400 kg                                  | +1200 kg                                  |             |
| ↑↑↑↑↑↑↑ | +1600 kg                                  | +1300 kg                                  | +800 kg                                   | +1300 kg                                  | +1100 kg                                  |             |



|                                     |                              |                                    |                                     |                                                                                             |                                                                                             |
|-------------------------------------|------------------------------|------------------------------------|-------------------------------------|---------------------------------------------------------------------------------------------|---------------------------------------------------------------------------------------------|
| Capacità di carico                  | Load capacity                | Capacité de charge                 | Capacidad de carga                  | ① 2300 kg<br>② 2000 kg<br>③ 1500 kg<br>④ 2000 kg<br>⑤ 1800 kg                               | ① 2300 kg<br>② 2000 kg<br>③ 1500 kg<br>④ 2000 kg<br>⑤ 1800 kg                               |
| Velocità di sollevamento            | Lifting speed                | Vitesse de levage                  | Velocidad de elevación              | 12 m/min                                                                                    | 20 m/min                                                                                    |
| Massima altezza ancorata            | Max anchored height          | Hauter max avec ancrages           | Altura max con anclajes             | 220 m                                                                                       | 220 m                                                                                       |
| Dimensioni interne cesta            | Platform dimensions          | Dimensions du plancher             | Dimensiones de cabina               | ① 2,28 x 1,34 m<br>② 3,40 x 1,34 m<br>③ 4,00 x 1,34 m<br>④ 3,08 x 1,64 m<br>⑤ 3,43 x 1,64 m | ① 2,28 x 1,34 m<br>② 3,40 x 1,34 m<br>③ 4,00 x 1,34 m<br>④ 3,08 x 1,64 m<br>⑤ 3,43 x 1,64 m |
| Tensione alimentazione              | Input power range            | Tension d'alimentation             | Tensión de red                      | 230/400 V-50 Hz<br>275/480 V – 60 Hz                                                        | 230/400 V-50 Hz<br>275/480 V-60Hz                                                           |
| Interruttore protezione linea       | Protection switch            | Interrupteur de protection         | Interruptor de protección           | 25 A                                                                                        | 32 A                                                                                        |
| Potenza servizio continuo           | Power of the motors          | Puissance des moteurs              | Potencia de motorreductores         | 2 x 4 kW                                                                                    | 2 x 5,5 kW                                                                                  |
| Minima potenza di linea consigliata | Minimum line power suggested | Min. puissance de ligne conseillée | Min. Potencia de línea              | 12 kW                                                                                       | 15 kW                                                                                       |
| Peso unità base                     | Base unit weight             | Poids unité de base                | Peso unidad de base                 | ① 1.550 Kg<br>② 1.790 Kg<br>③ 1.830 Kg<br>④ 1.790 Kg<br>⑤ 1.900 Kg                          | ① 1.550 Kg<br>② 1.790 Kg<br>③ 1.830 Kg<br>④ 1.790 Kg<br>⑤ 1.900 Kg                          |
| Ingrassatore automatico cremagliera | Rack automatic greasing pump | Graisser automatique de cremallere | Engrasador automatico de cremallera | ✓                                                                                           | ✓                                                                                           |
| Sistema di sovraccarico             | Overload system              | Limiteur de charge                 | Limitador de carga                  | ✓                                                                                           | ✓                                                                                           |

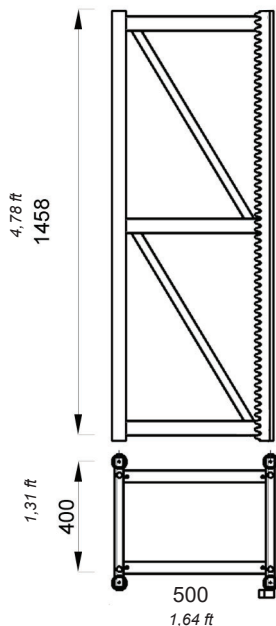


|          | ① Dimensioni<br>Dimensions<br>7,48 x 4,39 ft | ② Dimensioni<br>Dimensions<br>11,15 x 4,39 ft | ③ Dimensioni<br>Dimensions<br>13,12 x 4,39 ft | ④ Dimensioni<br>Dimensions<br>10,10 x 5,38 ft | ⑤ Dimensioni<br>Dimensions<br>11,25 x 5,38 ft |             |
|----------|----------------------------------------------|-----------------------------------------------|-----------------------------------------------|-----------------------------------------------|-----------------------------------------------|-------------|
|          | 5070 lb                                      | 4409 lb                                       | 3306 lb                                       | 4409 lb                                       | 3968 lb                                       | <b>EHM</b>  |
| 1 person | +4850 lb                                     | +4188 lb                                      | +3086 lb                                      | +4188 lb                                      | +3747 lb                                      | <b>EHPM</b> |
| 2 people | +4629 lb                                     | +3968 lb                                      | +2866 lb                                      | +3968 lb                                      | +3527 lb                                      |             |
| 3 people | +4409 lb                                     | +3747 lb                                      | +2645 lb                                      | +3747 lb                                      | +3306 lb                                      |             |
| 4 people | +4188 lb                                     | +3527 lb                                      | +2425 lb                                      | +3527 lb                                      | +3086 lb                                      |             |
| 5 people | +3968 lb                                     | +3306 lb                                      | +2204 lb                                      | +3306 lb                                      | +2866 lb                                      |             |
| 6 people | +3747 lb                                     | +3086 lb                                      | +1984 lb                                      | +3086 lb                                      | +2645 lb                                      |             |
| 7 people | +3527 lb                                     | +2866 lb                                      | +1763 lb                                      | +2866 lb                                      | +2425 lb                                      |             |



|                                     |                              |                                    |                                     |                                                                                                      |                                                                                                      |
|-------------------------------------|------------------------------|------------------------------------|-------------------------------------|------------------------------------------------------------------------------------------------------|------------------------------------------------------------------------------------------------------|
| Capacità di carico                  | Load capacity                | Capacité de charge                 | Capacidad de carga                  | ① 5070 lb<br>② 4188 lb<br>③ 3306 lb<br>④ 4409 lb<br>⑤ 3968 lb                                        | ① 2300 kg<br>② 2000 kg<br>③ 1500 kg<br>④ 2000 kg<br>⑤ 1800 kg                                        |
| Velocità di sollevamento            | Lifting speed                | Vitesse de levage                  | Velocidad de elevación              | 39 ft/min                                                                                            | 65 ft/min                                                                                            |
| Massima altezza ancorata            | Max anchored height          | Hauter max avec ancrages           | Altura max con anclajes             | 722 ft                                                                                               | 722 ft                                                                                               |
| Dimensioni interne cesta            | Platform dimensions          | Dimensions du plancher             | Dimensiones de cabina               | ① 7,48 x 4,39 ft<br>② 11,15 x 4,39 ft<br>③ 13,12 x 4,39 ft<br>④ 10,10 x 5,38 ft<br>⑤ 11,25 x 5,38 ft | ① 7,48 x 4,39 ft<br>② 11,15 x 4,39 ft<br>③ 13,12 x 4,39 ft<br>④ 10,10 x 5,38 ft<br>⑤ 11,25 x 5,38 ft |
| Tensione alimentazione              | Input power range            | Tension d'alimentation             | Tensión de red                      | 230/400 V-50 Hz<br>275/480 V – 60 Hz                                                                 | 230/400 V-50 Hz<br>275/480 V-60Hz                                                                    |
| Interruttore protezione linea       | Protection switch            | Interrupteur de protection         | Interruptor de protección           | 25 A                                                                                                 | 32 A                                                                                                 |
| Potenza servizio continuo           | Power of the motors          | Puissance des moteurs              | Potencia de motorreductores         | 2 x 4 kW                                                                                             | 2 x 5,5 kW                                                                                           |
| Minima potenza di linea consigliata | Minimum line power suggested | Min. puissance de ligne conseillée | Min. Potencia de linea              | 12 kW                                                                                                | 15 kW                                                                                                |
| Peso unità base                     | Base unit weight             | Poids unité de base                | Peso unidad de base                 | ① 3.417 lb<br>② 3,946 lb<br>③ 4,034 lb<br>④ 3,946 lb<br>⑤ 4,188 lb                                   | ① 3.417 lb<br>② 3,946 lb<br>③ 4,034 lb<br>④ 3,946 lb<br>⑤ 4,188 lb                                   |
| Ingrassatore automatico cremagliera | Rack automatic greasing pump | Graisser automatique de cremallere | Engrasador automatico de cremallera | ✓                                                                                                    | ✓                                                                                                    |
| Sistema di sovraccarico             | Overload system              | Limiteur de charge                 | Limitador de carga                  | ✓                                                                                                    | ✓                                                                                                    |

## COLONNA - MAST

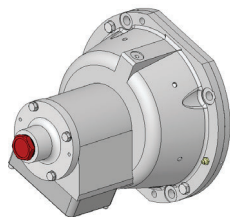


Compatibile con:  
Interchangeability:

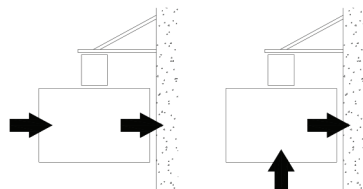
ELSA PM-M 50  
ELSA H20  
ELSA P40



158,73 lb



Freno d'emergenza ad arresto  
progressivo  
Overspeed safety device with  
progressive stop



Configurazioni d'accesso possibili  
Possible access configurations

| MAXIMUM LOAD WEIGHING ON THE BASE AREA BY FULL MOVING LOADED UNIT |                  |         |            |
|-------------------------------------------------------------------|------------------|---------|------------|
| MASSIME SOLLECITAZIONI GRAVANTI SUL BASAMENTO A PIENO CARICO      |                  |         |            |
| HEIGHT (m)                                                        | n° mast sections | F (daN) | P (daN/m²) |
| 10                                                                | 7                | 1279,9  |            |
| 20                                                                | 14               | 1305,8  |            |
| 30                                                                | 21               | 1470,3  |            |
| 40                                                                | 28               | 1689,4  |            |
| 50                                                                | 35               | 1908,5  |            |
| 60 **                                                             | 42               |         | 3922       |
| 70                                                                | 49               |         | 4209       |
| 80                                                                | 55               |         | 4455       |
| 90                                                                | 62               |         | 4742       |
| 100                                                               | 69               |         | 5029       |
| 150                                                               | 103              |         | 6423       |
| 200                                                               | 138              |         | 7858       |

\*\* For machines with installations for heights greater than 50 m the base must always be placed on the ground.

\*\* Per macchine con installazioni superiori a 50 m, il basamento deve essere posto sul suolo direttamente senza vitoni.

